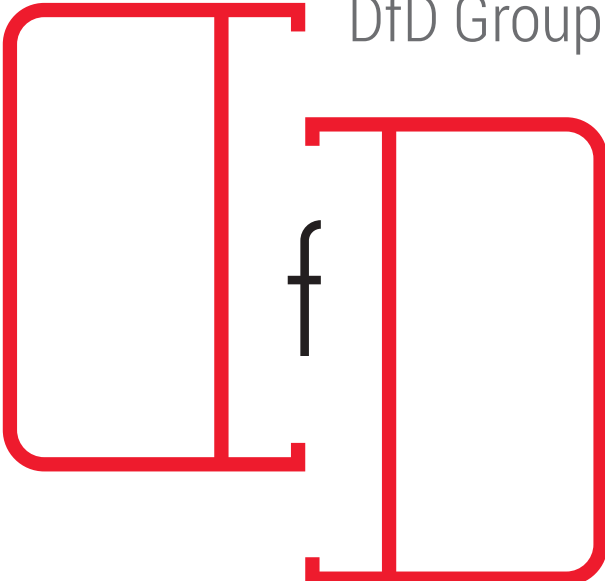




DfD Group





The background of the entire image is a repeating pattern of a stylized logo. The logo consists of a square with rounded corners, containing a smaller square with a lowercase 'f' inside. The text 'DFD Group' is written in a small, sans-serif font at the top of the square. The pattern is light gray and covers the entire page.

## **INNOVATION**

Every aspect of our work

## **OPTIMIZATION**

of every process in our company

## **QUALITY**

for every customer of DFD



# OUR ROOTS

## **WHEN**

The company was founded in 2001. Since its creation the company changed its activity from custom brokerage, services, trade representative to production and trade of metal products by buying an old production base and transforming it.

## **WHERE**

Oryahovo, Bulgaria on the border with Romania. There is a direct connection to Romania via Donau river with a ferry.

## **WHO**

The company is entirely family owned. DFD is an abbreviation for the two families, who started their mutual business "adventure" – DIKOVI and DIMITROVI.

## **WHAT**

We transform and produce products from:  
• coils • sheets • tubes





**GEORGI DIKOV**  
Production manager

# OUR FAMILY



**EVELINA DIMITROVA**  
Innovation & trade manager



**DIKO DIKOV**  
Production manager



**CHAVDAR DIMITROV**  
Marketing & it expert



OUR  
**STRENGTH**

IS THE  
TEAM



OUR

**PASSION:**

INNOVATION

IN VARIOUS

FORMS





PASSION





# PASSION





# PASSION





OUR

**PRINCIPLES:**

CORRECTNESS

LOYALTY

RESPONSIBILITY

FLEXIBILITY





OUR

**SERVICE:**

REACTIVITY

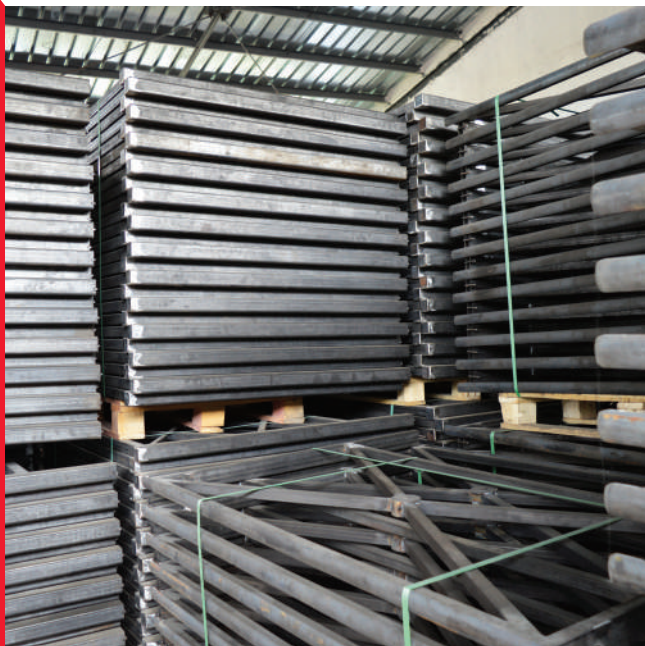
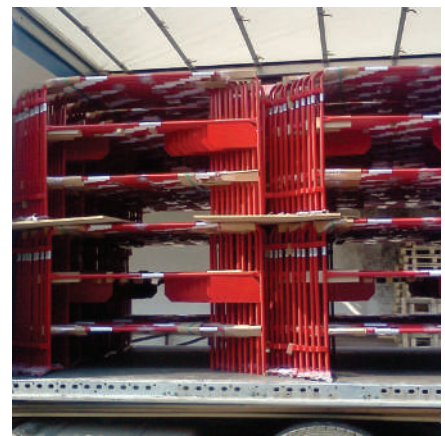
QUALITY

CERTIFICATION

VARIETY



## SERVICE



## DFD GROUP

In our factory of over 2 acres, DFD Group's young and dynamic team of professionals offers our client tailor made METAL PROCESSING services in order to meet their every need.

- steel
- transforming steel
- aluminum
- stainless steel

Three shifts a day, 7 days a week, we are transforming

- coils
- sheets
- tubes

A to Z Metal Processing

- cutting
- bending
- stamping
- drilling
- turning and milling

## STEEL, STAINLESS STEEL & ALUMINIUM WELDING SOLUTIONS

Our team of professionals cover the complete scope of welding services

- Automatic
- Semi-automatic
- Spot Welding
- ARC Welding

Our LASER CUTTING equipment increases the possibilities for design and engineering of steel, aluminum and stainless steel. DFD Group offers to its customers a wide range of FINISHING WORKS

- Temperature treatment
- Grinding
- Painting facilities
- Powder coating
- Galvanization EN ISO 1461:2009



## A TO Z SOLUTIONS

DFD Group's reliable team of professionals' main aim is to be your reliable INDUSTRIAL & TRADE Partner. We are covering the complete lifecycle of a product.

- Conception and R&D
- Industrial tool production
- Processing and production
- Commercial circuit preparation and introduction
- Packaging
- Storage
- Expedition and tracking



OUR

**BASE:**

WORKSHOP

PROCESSES

CERTIFICATES

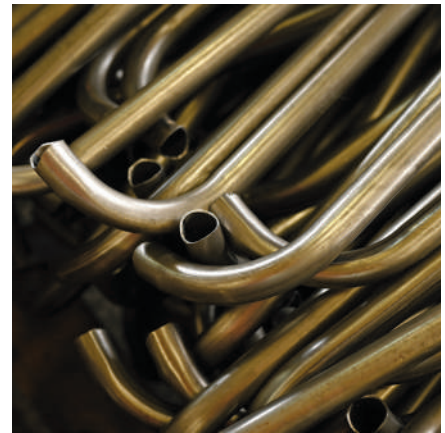
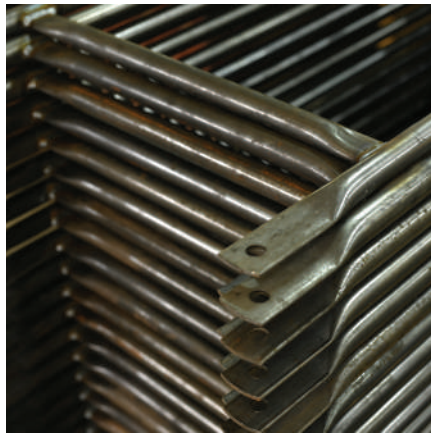
WAREHOUSE

LASER

**WORKSHOP**



# PROCESSES







# PROCESSES





# CERTIFICATES

**300 KG - 1 MIN**

concentrated weight



**600 KG - 1 MIN**

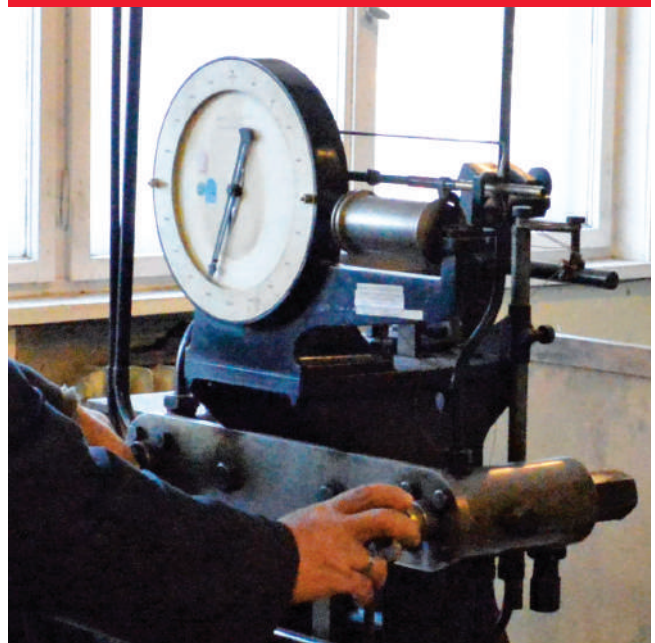
evenly distributed



**800 KG - 1 MIN**



**1100 KG**





## LASER CUTTING OF:

Sheets - up to 12 mm

Round metal pipes - up to  $\varnothing$  200

Square metal pipes - up to 140 x 140

[lazer-cutting.com](http://lazer-cutting.com)



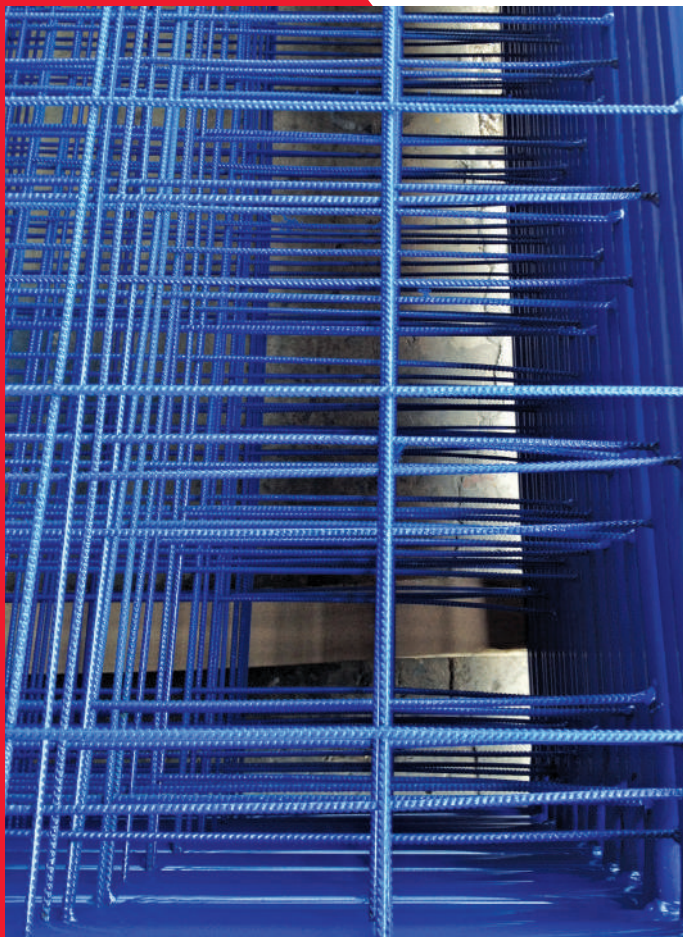
OUR

**PRODUCT**

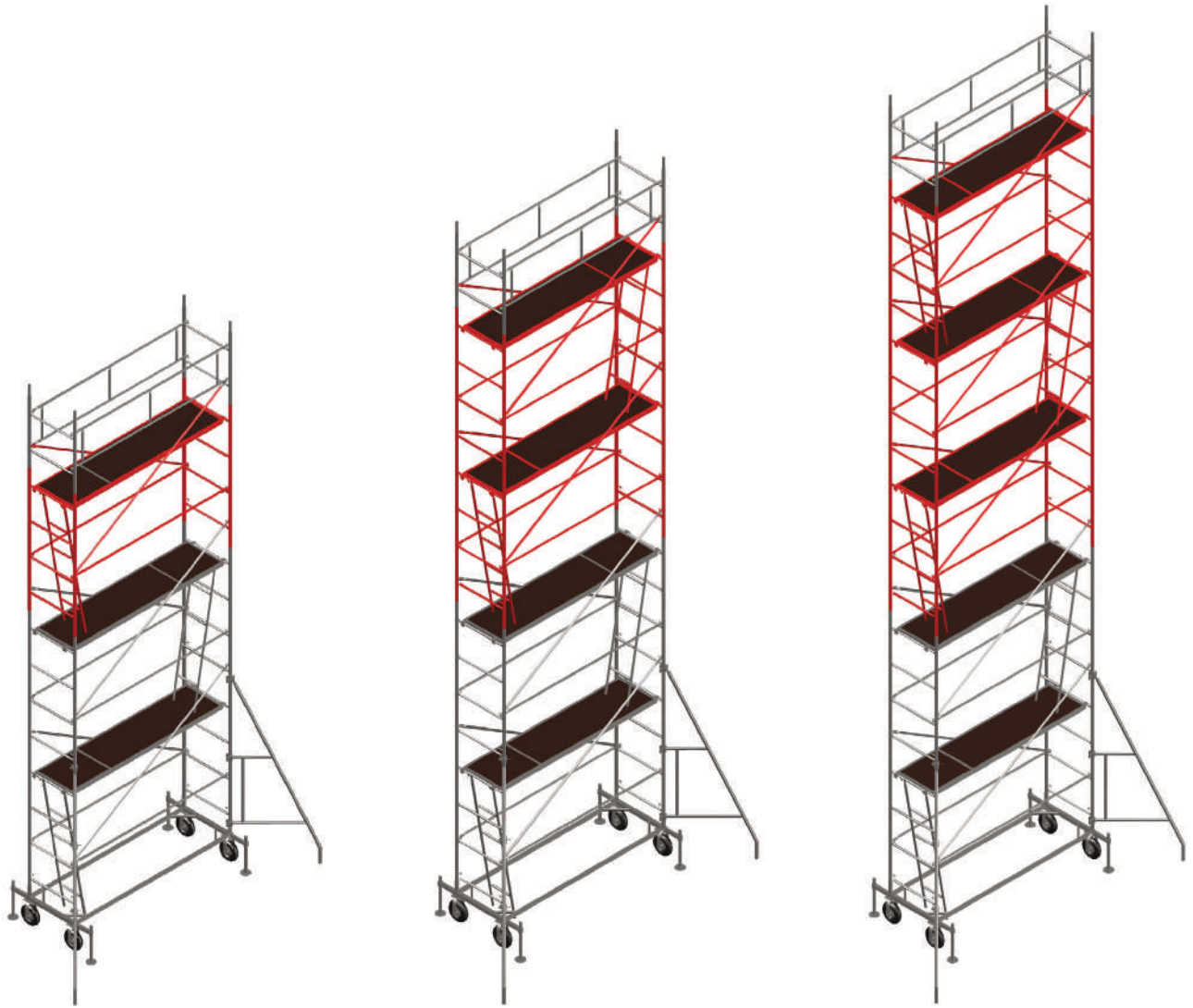
**RANGES**

OVER THE

YEARS



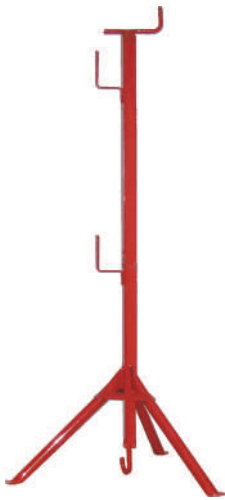
## OUR HISTORY

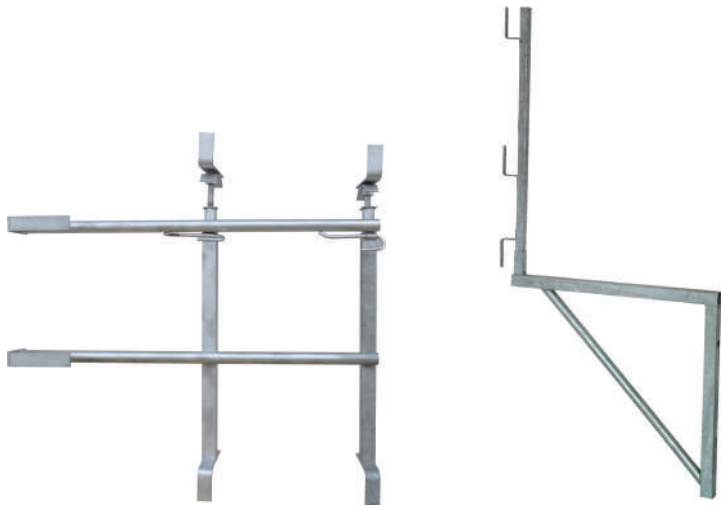






## OUR HISTORY





OUR

# PRODUCTS

CITY BARRIERS

TP BARRIERS

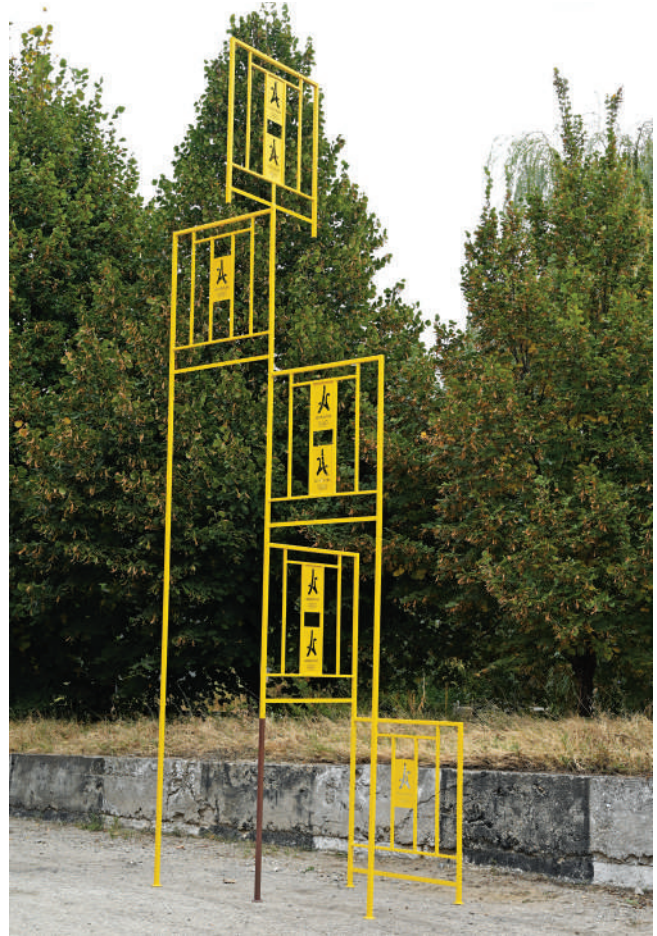
RACKS FOR BARRIERS

MOBILE BARRIER PL

TRESTLE

BACS

CONTAINERS



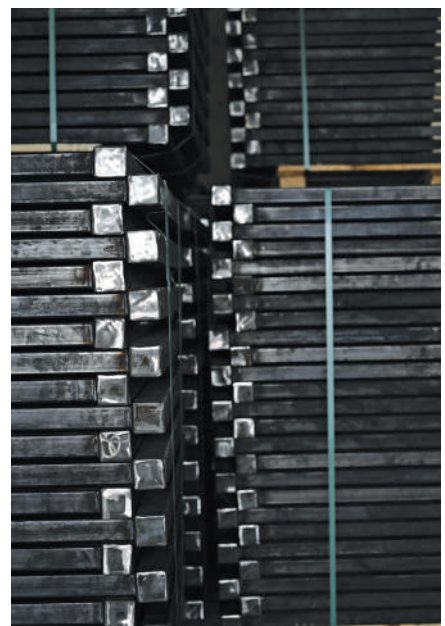
## PRODUCTS



## CITY BARRIERS

With an extensive "know how" and over two decades of expertise, DFD Group is offering a very wide choice of city barriers, entirely flexible when it comes to:

- The barrier dimensions
- Tube type
- Thickness of the material
- Personalization by color
- Hot-dip galvanization



## PRODUCTS



### BARRIER T.P. BARRIER T.P. TUBE Ø 25 OR Ø 28

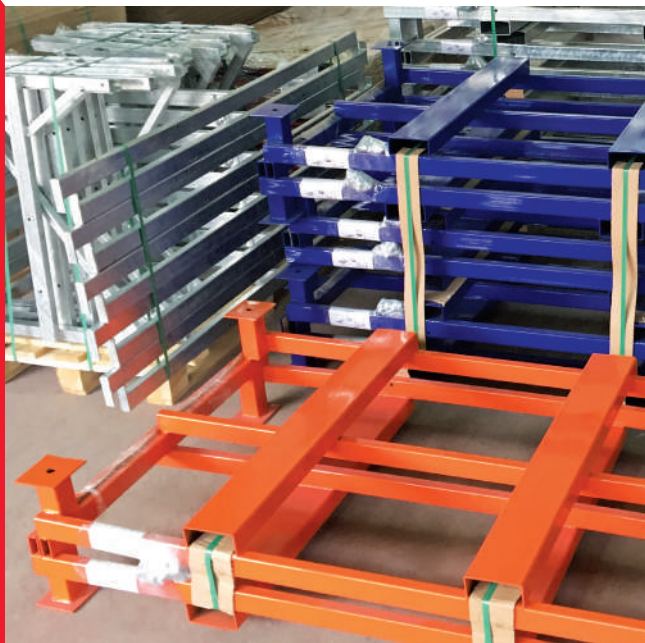
- Powder RAL paint by choice
- Vinyl or reflective strips
- Strips number choice
- Choice of nameplate:  
83 x 166 / 166 x 333 / 333 x 333/ Custom size







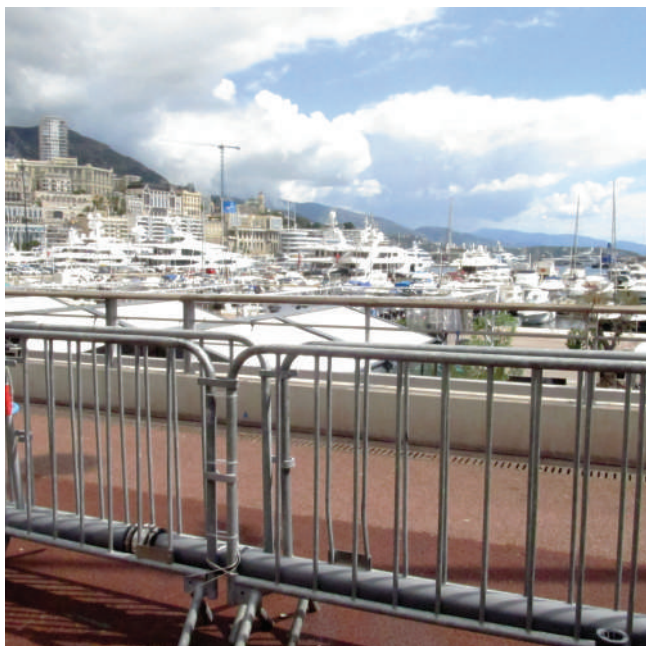
## PRODUCTS



### **RACK FOR 50 BARRIERS / 100 BARRIERS**

The barrier racks have become an essential for our product line. They:

- Save time of loading & unloading
- Are space efficient
- Increase the life of the barriers with better storage
- Optional laser cutting plate
- Powder Ral paint by choice



## MOBILE BARRIER PL TYPE B

- Round steel tubes  $\varnothing$  32 mm
- Height 1,05 m
- Robust vertical round steel rod bars  $\varnothing$  16 mm
- Hooks and ears are welded on the sides
- Powder paint
- Hot-dip galvanization
- Laser cut plate as an option



## PRODUCTS



### TELESCOPIC TRESTLE WITH FOLDABLE LEGS

The trestle's feet can be removed for optimized transportation and storage space.

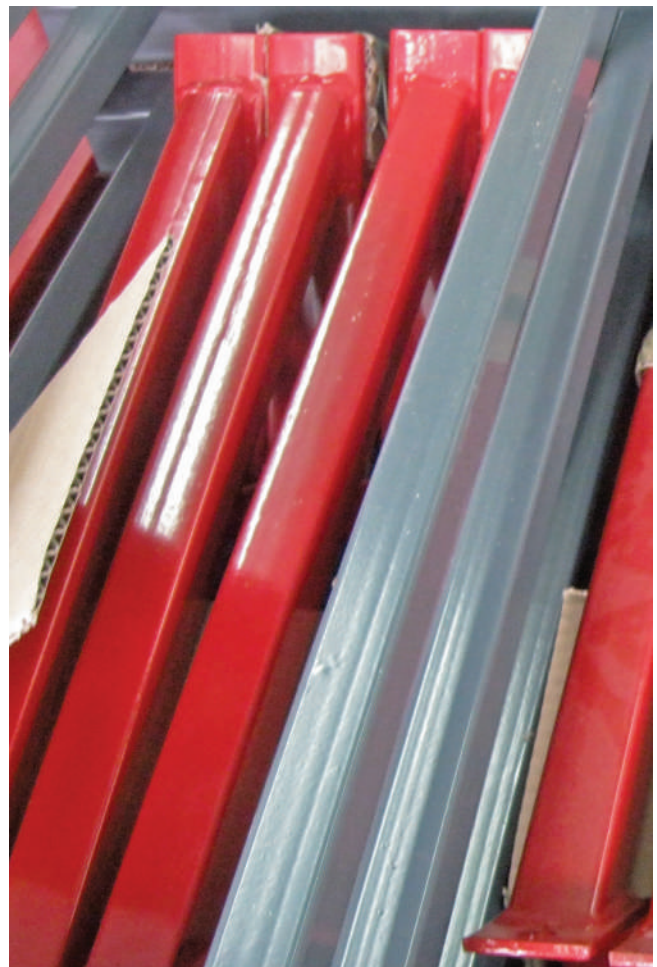
Load capacity: 200 kg

Traverse height: 1100 mm

Dimension min/max: 1200/2100 mm

Available in both powder paint or galva.





## PRODUCTS



## TUBES

TUBES are used to move products in bulk with hook for cranes with securing it in 4 points. Lifting is possible with a fork-lift without a risk of tipping with 2 secure ties under the tube. Capacity: 360 l / 500 l



25 Krum Kyulyavkov Street, Sofia, Bulgaria  
tel. +359 886 302 411, +359 885 810 921  
e-mail: office@dfd-group.com

**[WWW.DFD-GROUP.COM](http://WWW.DFD-GROUP.COM)**





